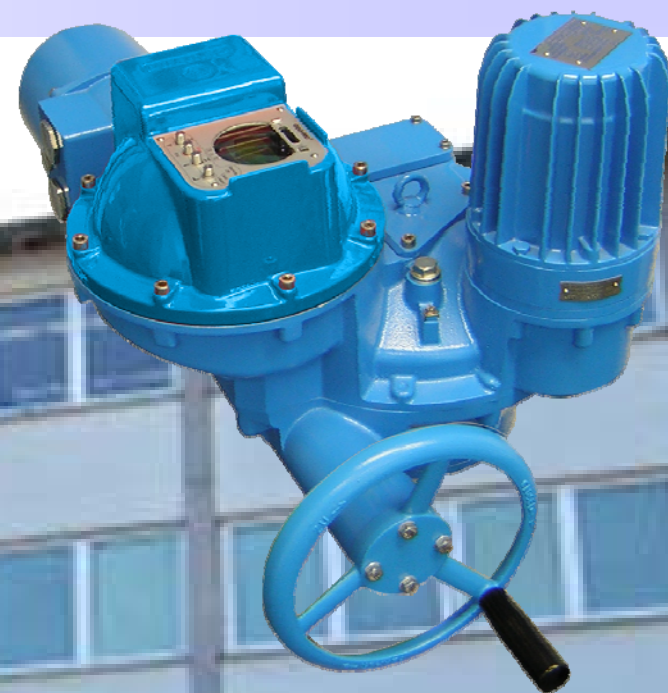


EMG DREHMO® —— 世界水准的智能一体化电动执行机构



欢迎光临

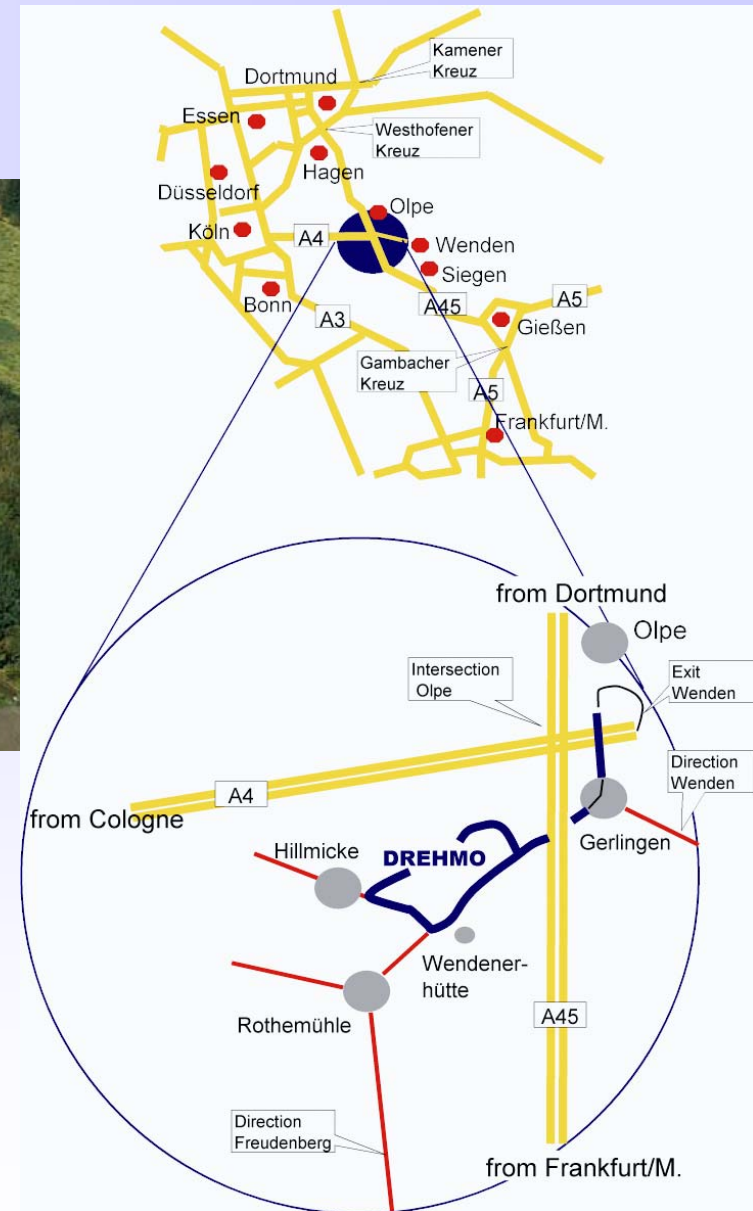
德国EMG-DREHMO (德瑞) 公司

电动执行机构

EMG DREHMO® —— 世界水准的智能一体化电动执行机构



EMG集团德国总部，德国文登市（科隆东60公里）



EMG DREHMO® —— 世界水准的智能一体化电动执行机构



DREHMO公司总部,文登 /德国

EMG
DREHMO



DREHMO®
Stellantriebe
Actuators
Servo-moteurs

三千控制阀网

www.cv3000.com

EMG DREHMO® —— 世界水准的智能一体化电动执行机构



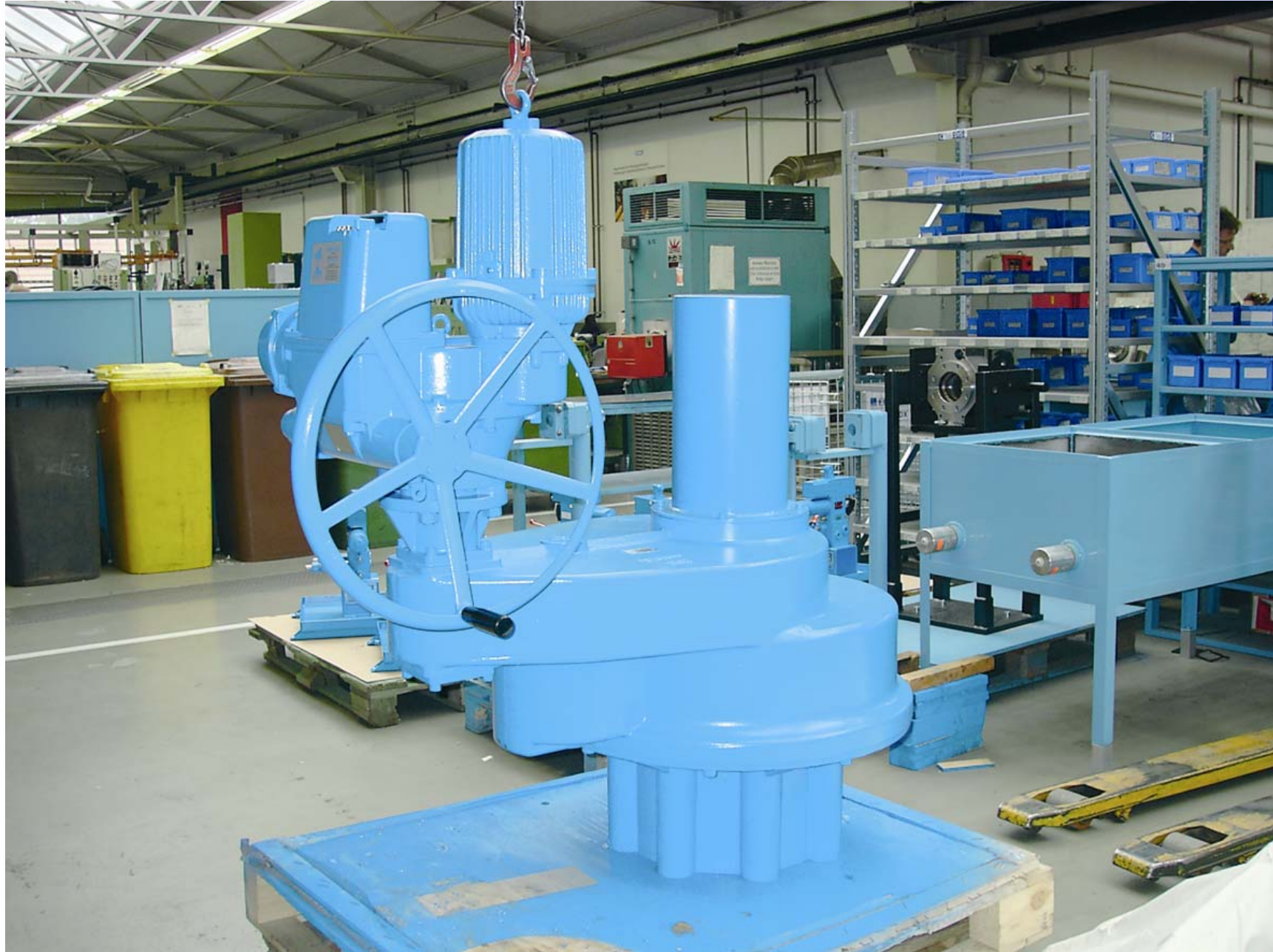
装配线



计算机测试诊断



EMG DREHMO® —— 世界水准的智能一体化电动执行机构



EMG DREHMO® — — 世界水准的智能一体化电动执行机构

EMG— 质量认证满足严格的欧洲工业产品要求

ZERTIFIKAT ♦ CERTIFICATE ♦ CERTIFICADO ♦ CERTIFICAT ♦ СЕРТИФИКАТ ♦ 認證證書 ♦ CERTIFICATE ♦ ZERTIFIKAT

CERTIFICATE



The Certification Body
of TÜV Management Service GmbH
certifies that



DREHMO GmbH
Industriestraße 1 - D-57482 Wenden

has established
and applies a Quality System for

Development, Sales and Service of
DREHMO®- Actuators.

An audit was performed, Report No. 70062967
Proof has been furnished that the requirements
according to

DIN EN ISO 9001 :2000
are fulfilled. The certificate is valid in conjunction
with the main-certificate until March 2005
Certificate Registration No. 12 109 16893 / 3 TMS



Munich, 2002-07-04



Certification Body
of TÜV Management Service GmbH
Unternehmensgruppe TÜV SÜD Deutschland



CE

DREHMO®
Stellantriebe
Actuators
Servo-moteurs

Declaration of conformity

Drehmo GmbH
Industriestr. 1
D - 57482 Wenden

We hereby declare that the following product:

Electric valve actuators DREHMO®

Standard		Tronic	
D 30	- D 1000	DT 30	- DT 1000
DR 30	- DR 1000	DTR 30	- DTR 1000
DP 30	- DP 3200	DPT 30	- DPT 3200

Matic I		Matic C	
DMI 30	- DMI 1000	DMC 30	- DMC 1000
DMR 30	- DMR 1000	DMCR 30	- DMCR 1000
DPMI 30	- DPMI 3200	DPMC 30	- DPMC 3200

Bus Matic		Sensor Matic	
DBMI-IS1		DM 30	- DM 1000
DBMI-IS2		DMR 30	- DMR 1000
DBMI-PB 1/DS/...		DPM 30	- DPM 3200
DBMI-PB 2/DS/...		DSM75	- DSM1200
		DSMR75	- DSMR1200

In its basic version is compliant to the following standards:

EC recommendation for machines	98/37/EC
EC recommendation for electro-magnetic compatibility	89/336/EEC
EC low-voltage recommendation	73/23/EEC

Applied harmonized standards:

EN 292	Safety of machines
EN 55011	Emitted interference
EN 50082 Part 2	Generic immunity standard
EN 61000 Part 3-2 ¹	Conduct Harmonics
EN 61010 Part 1	Safety requirements for electrical measuring, (automatic) control and laboratory equipment

Weeden, 17.01.2003

W. Hädel
Händel
General Manager

¹ Matic C

EMG DREHMO® — — 世界水准的智能一体化电动执行机构



防爆认证

等级: EEx ed IIC T4



CERTIFICATE

- 1) about acknowledgement of quality assurance production 
- 2) - Directive 94/9/EC -
Equipment and protective systems intended for use in potentially explosive atmospheres
- 3) Certificate number: **DMT 03 ATEX ZQS/E189**
- 4) Product category: Electrical equipment and devices, equipment-groups I and II, categories M1, M2, 1 and 2: DREHMO-actuators




DREHMO
Standardtrieb
Actuator
Servomotoren
- 5) Manufacturer: **DREHMO GmbH**
- 6) Site of manufacture: **Industriestr. 1, 57482 Wenden, Germany**
- 7) The certification body of Deutsche Montan Technologie GmbH, notified body N° 0158 in accordance with Article 9 of the Directive 94/9/EC of the European Parliament and the Council of 23 March 1994, certifies that the manufacturer has a production quality system, which complies with Annex IV of the Directive.
- 8) This certificate is based on audit report ZQS/E189/03, issued 19.12.02 and is valid until 04.12.05.
This certificate can be withdrawn if the manufacturer no longer satisfies the requirements of Annex IV.
Results of periodical re-assessments of the quality system are a part of this certificate.
- 9) According to Article 10 (1) of the Directive 94/9/EC the CE marking shall be followed by the identification Number 0158 of Deutsche Montan Technologie GmbH as notified body involved in the production control stage.

Deutsche Montan Technologie GmbH
Essen, 13.02.03




Certification body




Special services unit

This is a translation from the German original.
In the case of admission only the German wording shall be valid and binding.
Page 1 of 1
This certificate may only be reproduced in its entirety and without any change.
Am Technologiepark 1, 40107 Essen, Telefon (0201)721-414, Telefax (0201)721-1710


Physikalisch-Technische Bundesanstalt 


Braunschweig und Berlin





(1) EC-TYPE-EXAMINATION CERTIFICATE

(Translation)

- (2) Equipment and Protective Systems Intended for Use in Potentially Explosive Atmospheres - Directive 94/9/EC
- (3) EC-type-examination Certificate Number: **PTB 02 ATEX 1143** 
- (4) Equipment: **Actuator, type D.....-Ex**
- (5) Manufacturer: **Drehmo GmbH**
- (6) Address: **Industriestrasse 1, 57482 Wenden, Germany**
- (7) This equipment and any acceptable variation thereto are specified in the schedule to this certificate and the documents therein referred to.
- (8) The Physikalisch-Technische Bundesanstalt, notified body No. 0102 in accordance with Article 9 of the Council Directive 94/9/EC of 23 March 1994, certifies that this equipment has been found to comply with the Essential Health and Safety Requirements relating to the design and construction of equipment and protective systems intended for use in potentially explosive atmospheres, given in Annex II to the Directive.
The examination and test results are recorded in the confidential report PTB Ex 02-12097.
- (9) Compliance with the Essential Health and Safety Requirements has been assured by compliance with:
EN 50014:1997 + A1 + A2 EN 50018:2000 EN 50019:2000 EN 50020:1994
- (10) If the sign "X" is placed after the certificate number, it indicates that the equipment is subject to special conditions for safe use specified in the schedule to this certificate.
- (11) This EC-type-examination Certificate relates only to the design, examination and tests of the specified equipment in accordance to the Directive 94/9/EC. Further requirements of the Directive apply to the manufacturing process and supply of this equipment. These are not covered by this certificate.
- (12) The marking of the equipment shall include the following:

 **II 2 G EEx ed ib IIC T4**

Braunschweig, March 27, 2003

Zertifizierungsstelle Explosionschutz
By order: 
Dipl.-Phys. U. Volker 

EC-type-examination Certificates without signature and official stamp shall not be valid. The certificates may be photocopied only without alteration. Extracts or alterations are subject to approval by the Physikalisch-Technische Bundesanstalt. In case of disputes, the German text shall prevail.

EMG DREHMO® — — 世界水准的智能一体化电动执行机构

i-matic系列具有安全认证
IEC 61508:2000;SIL1;



EMG DREHMO® —— 世界水准的智能一体化电动执行机构



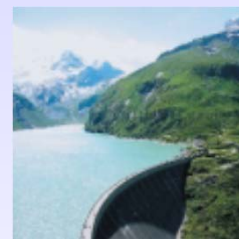
产品应用领域



电力：传统热电厂、燃煤电厂、燃气电厂和核电站



水厂和污水处理厂



石化工业，油气勘探、加工和存储



重工业、钢铁、造纸、水泥、楼宇自动化、采矿工业、船厂等



EMG
DREHMO



三一控制阀网

www.cv3000.com

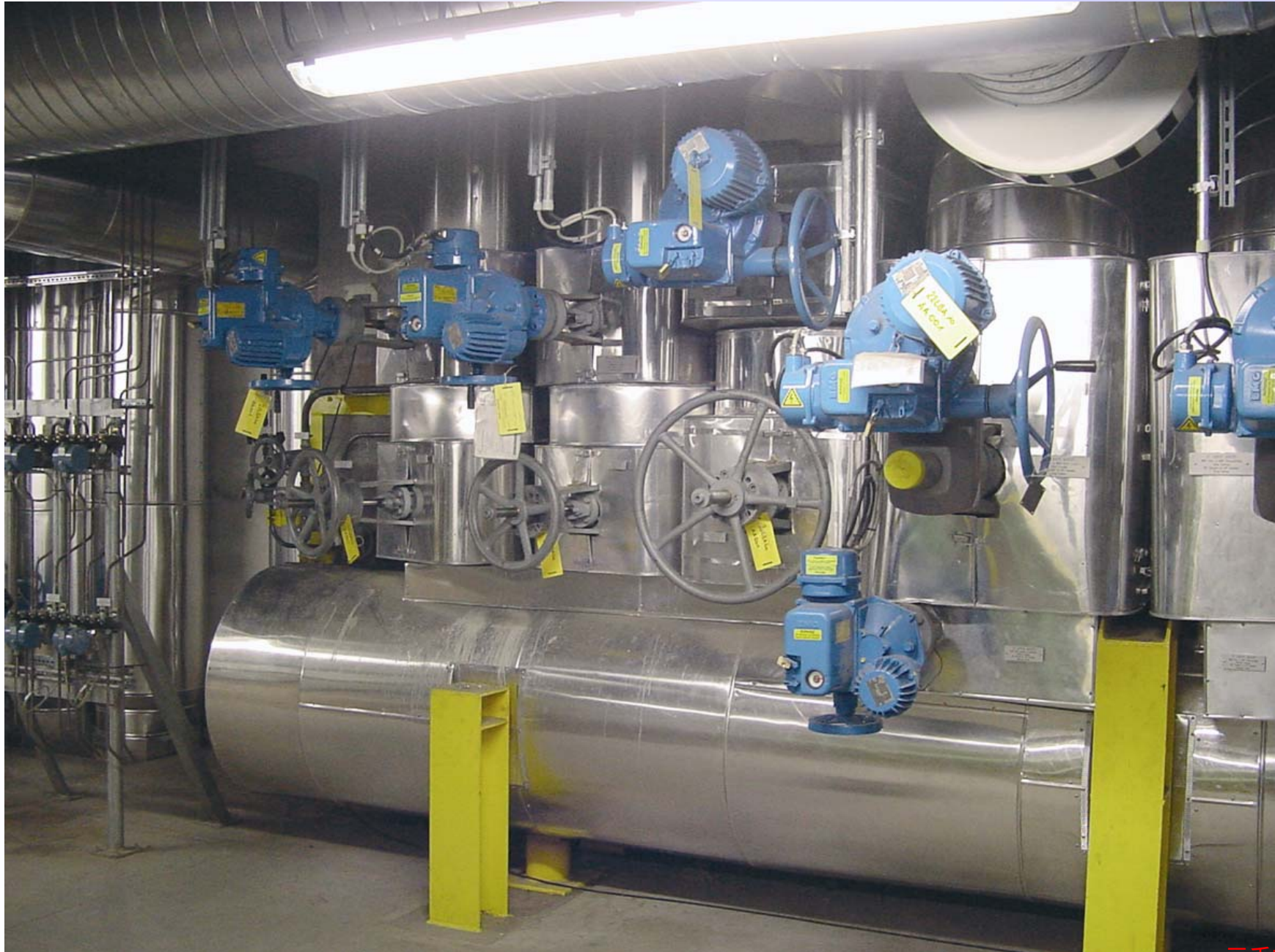
EMG DREHMO® —— 世界水准的智能一体化电动执行机构



EMG DREHMO® —— 世界水准的智能一体化电动执行机构



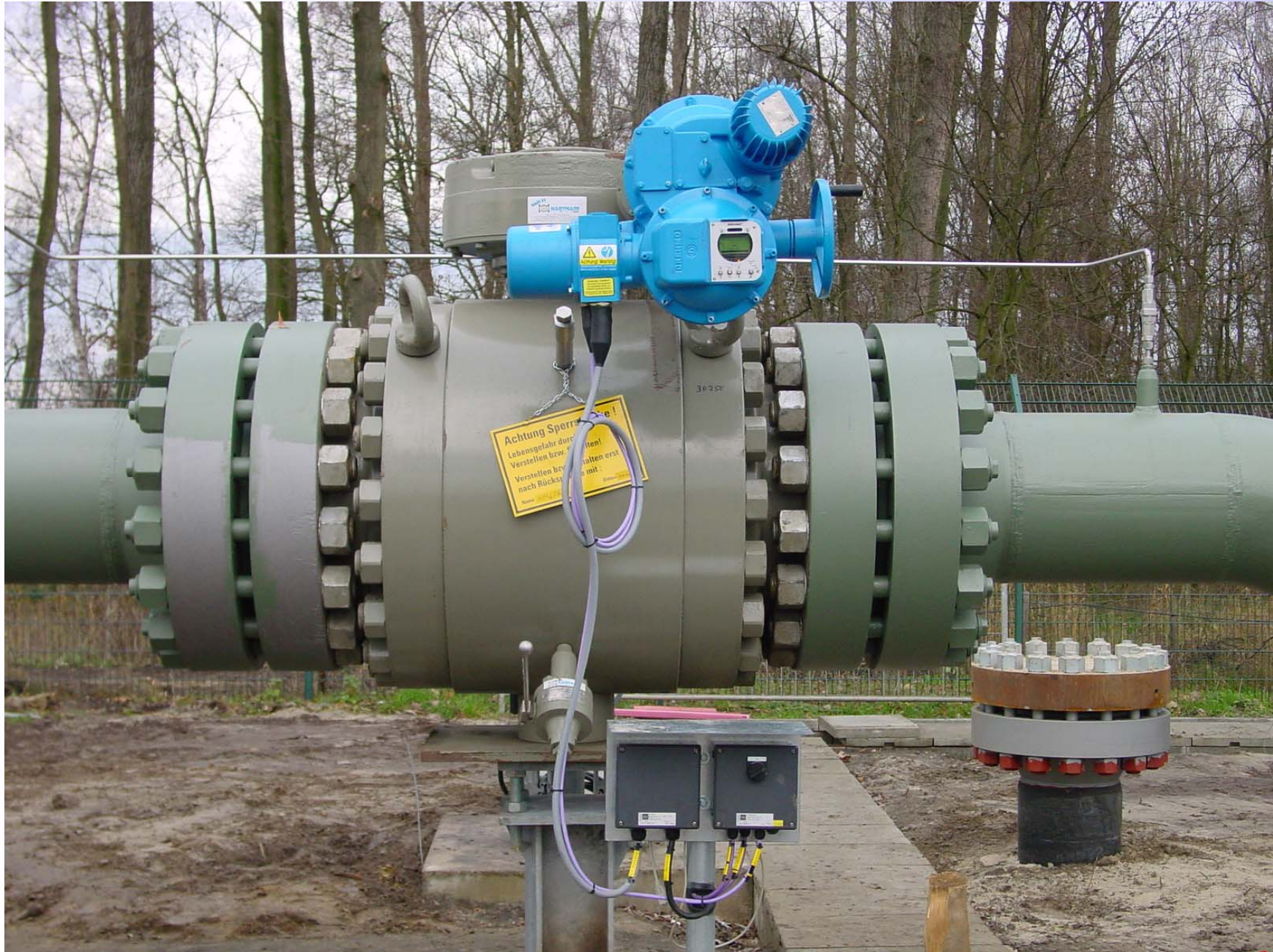
EMG DREHMO[®] —— 世界水准的智能一体化电动执行机构



EMG DREHMO® —— 世界水准的智能一体化电动执行机构



EMG DREHMO® —— 世界水准的智能一体化电动执行机构



Achtung Sperrschlüssel!
Lebensgefahr durch
Verstellen bzw. Öffnen!
Verstellen bzw. Öffnen erst
nach Rücksprache mit
[Name]

EMG DREHMO® —— 世界水准的智能一体化电动执行机构



EMG DREHMO® —— 世界水准的智能一体化电动执行机构



EMG DREHMO® —— 世界水准的智能一体化电动执行机构



EMG DREHMO® —— 世界水准的智能一体化电动执行机构



EMG DREHMO® —— 世界水准的智能一体化电动执行机构



EMG DREHMO® —— 世界水准的智能一体化电动执行机构



EMG DREHMO[®] —— 世界水准的智能一体化电动执行机构



EMG DREHMO® —— 世界水准的智能一体化电动执行机构



EMG DREHMO® —— 世界水准的智能一体化电动执行机构



EMG DREHMO® —— 世界水准的智能一体化电动执行机构



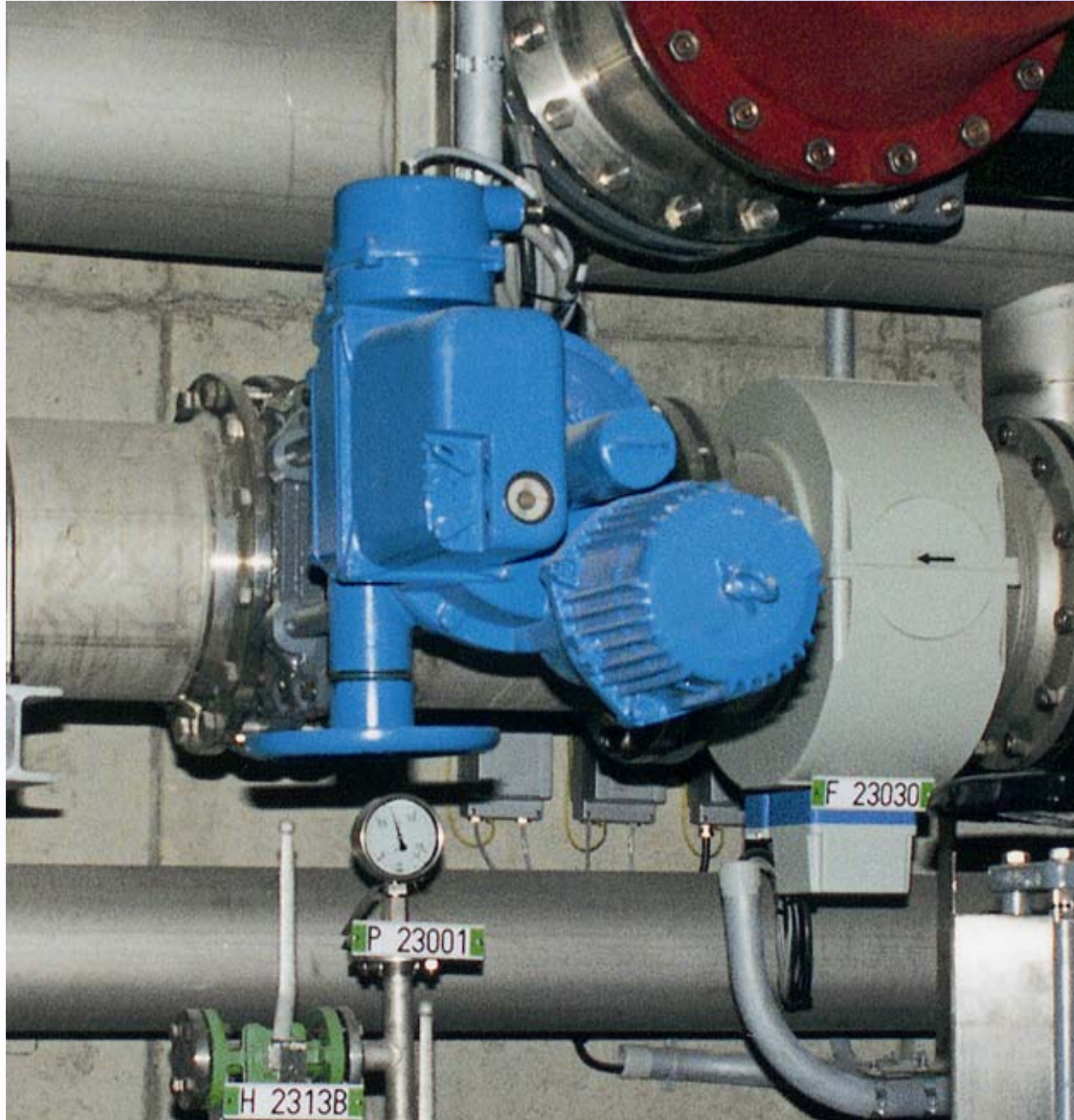
EMG DREHMO® —— 世界水准的智能一体化电动执行机构



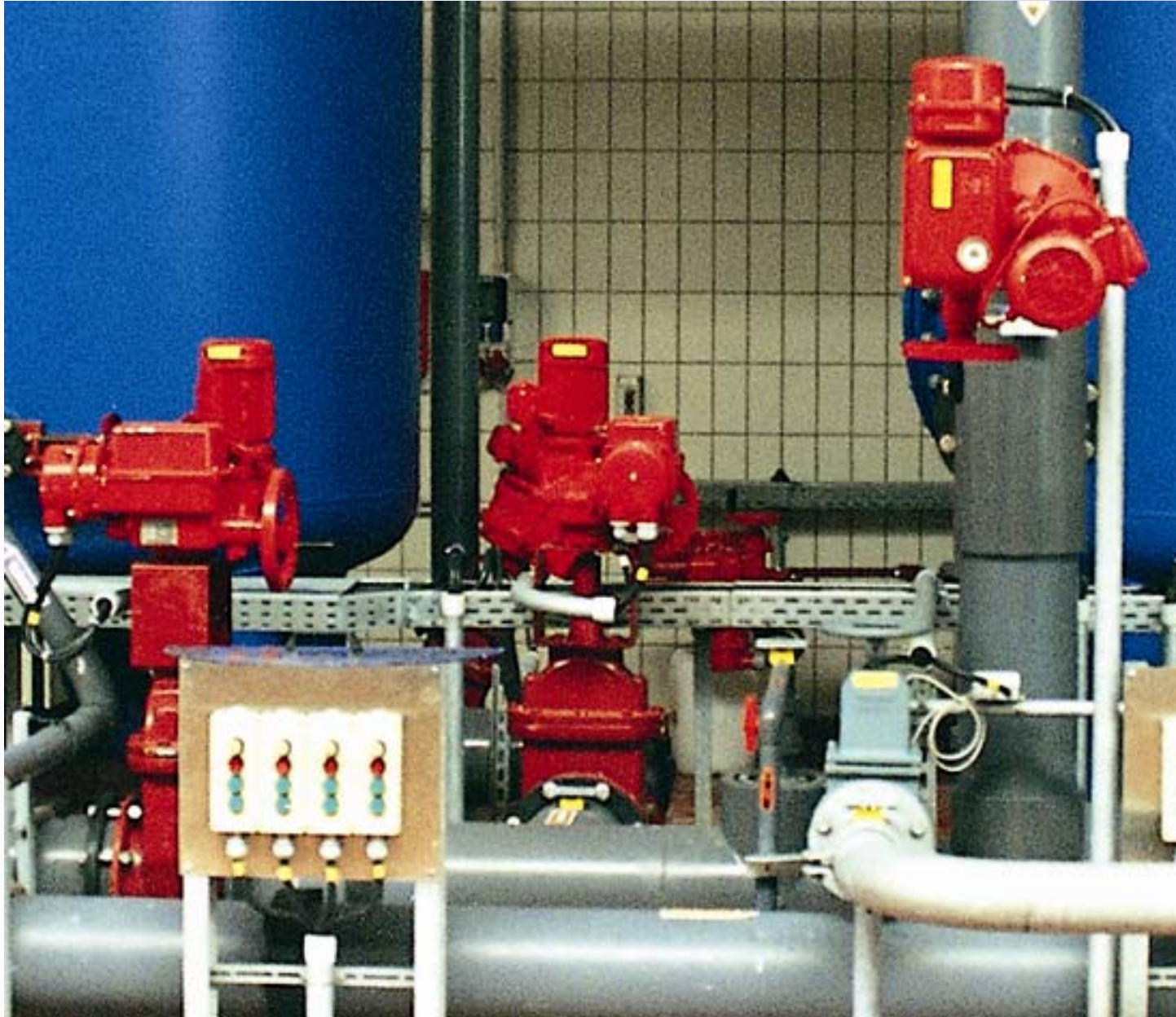
EMG DREHMO® —— 世界水准的智能一体化电动执行机构



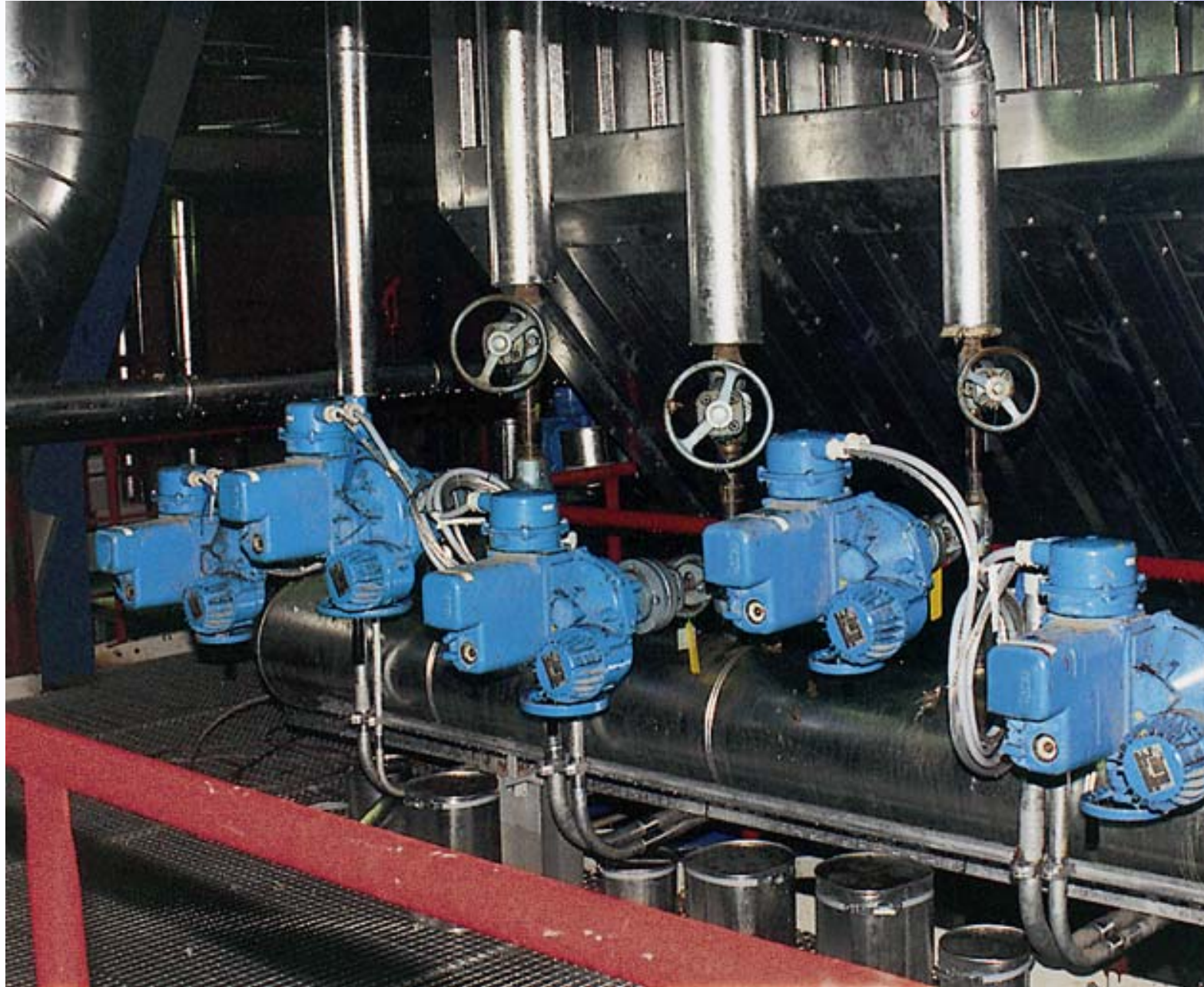
EMG DREHMO® —— 世界水准的智能一体化电动执行机构



EMG DREHMO® —— 世界水准的智能一体化电动执行机构



EMG DREHMO® —— 世界水准的智能一体化电动执行机构



EMG DREHMO® —— 世界水准的智能一体化电动执行机构



EMG DREHMO® —— 世界水准的智能一体化电动执行机构



EMG DREHMO® —— 世界水准的智能一体化电动执行机构



EMG DREHMO® —— 世界水准的智能一体化电动执行机构



EMG DREHMO® —— 世界水准的智能一体化电动执行机构



EMG DREHMO® —— 世界水准的智能一体化电动执行机构



EMG DREHMO® —— 世界水准的智能一体化电动执行机构



EMG DREHMO® —— 世界水准的智能一体化电动执行机构



EMG DREHMO® —— 世界水准的智能一体化电动执行机构



EMG DREHMO® —— 世界水准的智能一体化电动执行机构



EMG DREHMO® —— 世界水准的智能一体化电动执行机构



EMG DREHMO[®] —— 世界水准的智能一体化电动执行机构



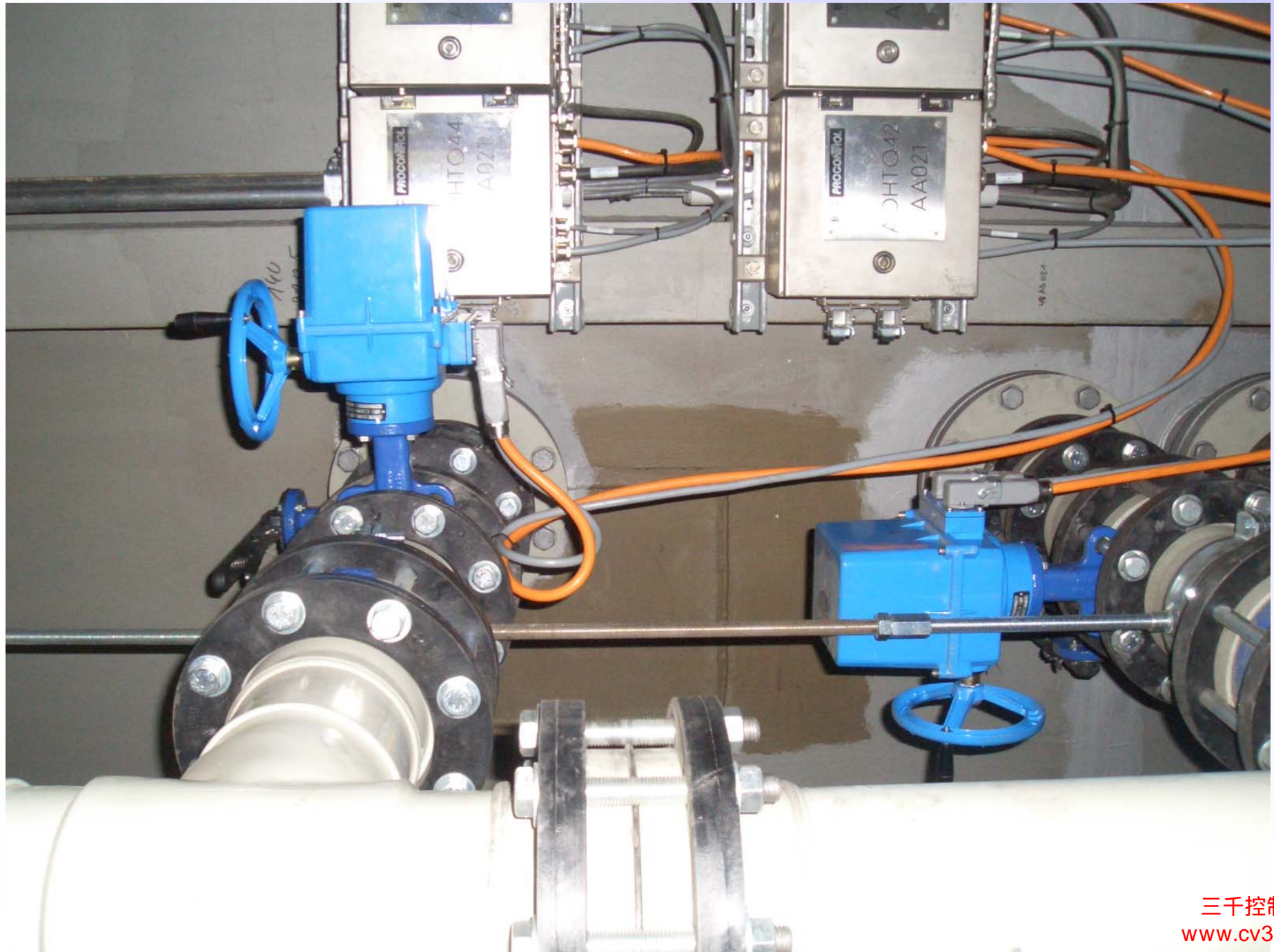
EMG DREHMO® —— 世界水准的智能一体化电动执行机构



EMG DREHMO® —— 世界水准的智能一体化电动执行机构



EMG DREHMO[®] —— 世界水准的智能一体化电动执行机构



EMG DREHMO® —— 世界水准的智能一体化电动执行机构

 **EMG**执行器的发展历史—**1900**年即开始生产，全球已运行近百万台

...1930

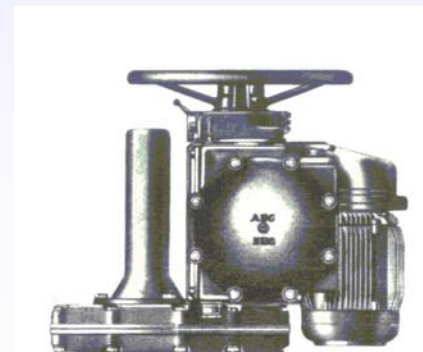
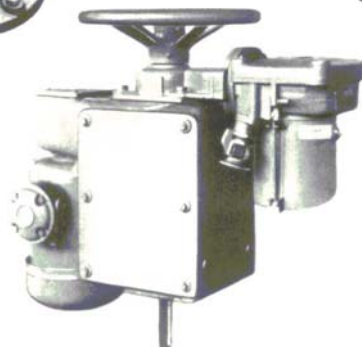
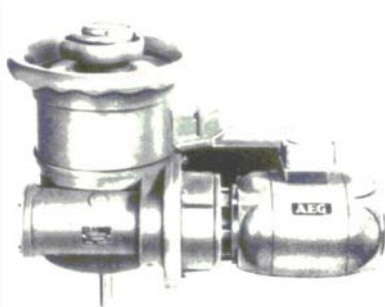
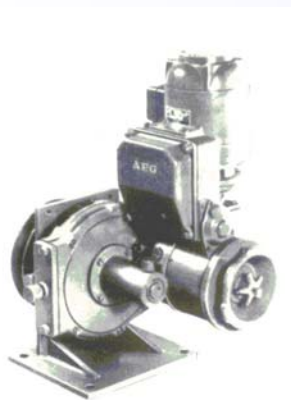
1931

1932

1935

1937

1960



EMG DREHMO® —— 世界水准的智能一体化电动执行机构



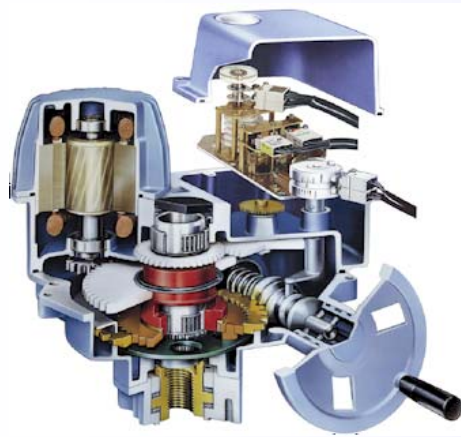
EMG执行器的发展历史

1975

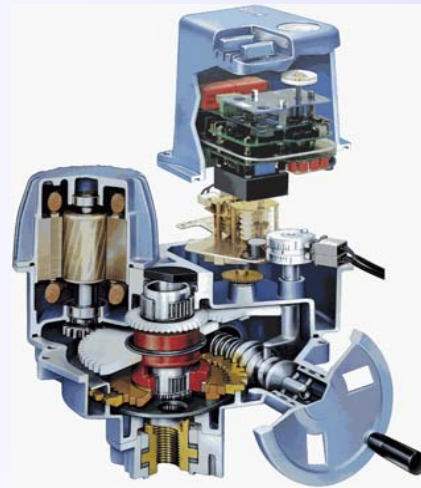
1992

1999

2003



DREHMO-Standard



DREHMO-Matic I



DREHMO-Matic C



DREHMO-i-Matic

EMG DREHMO® —— 世界水准的智能一体化电动执行机构



EMG DREHMO® —— 世界水准的智能一体化电动执行机构



EMG DREHMO® —— 世界水准的智能一体化电动执行机构



EMG DREHMO® —— 世界水准的智能一体化电动执行机构



EMG DREHMO® —— 世界水准的智能一体化电动执行机构



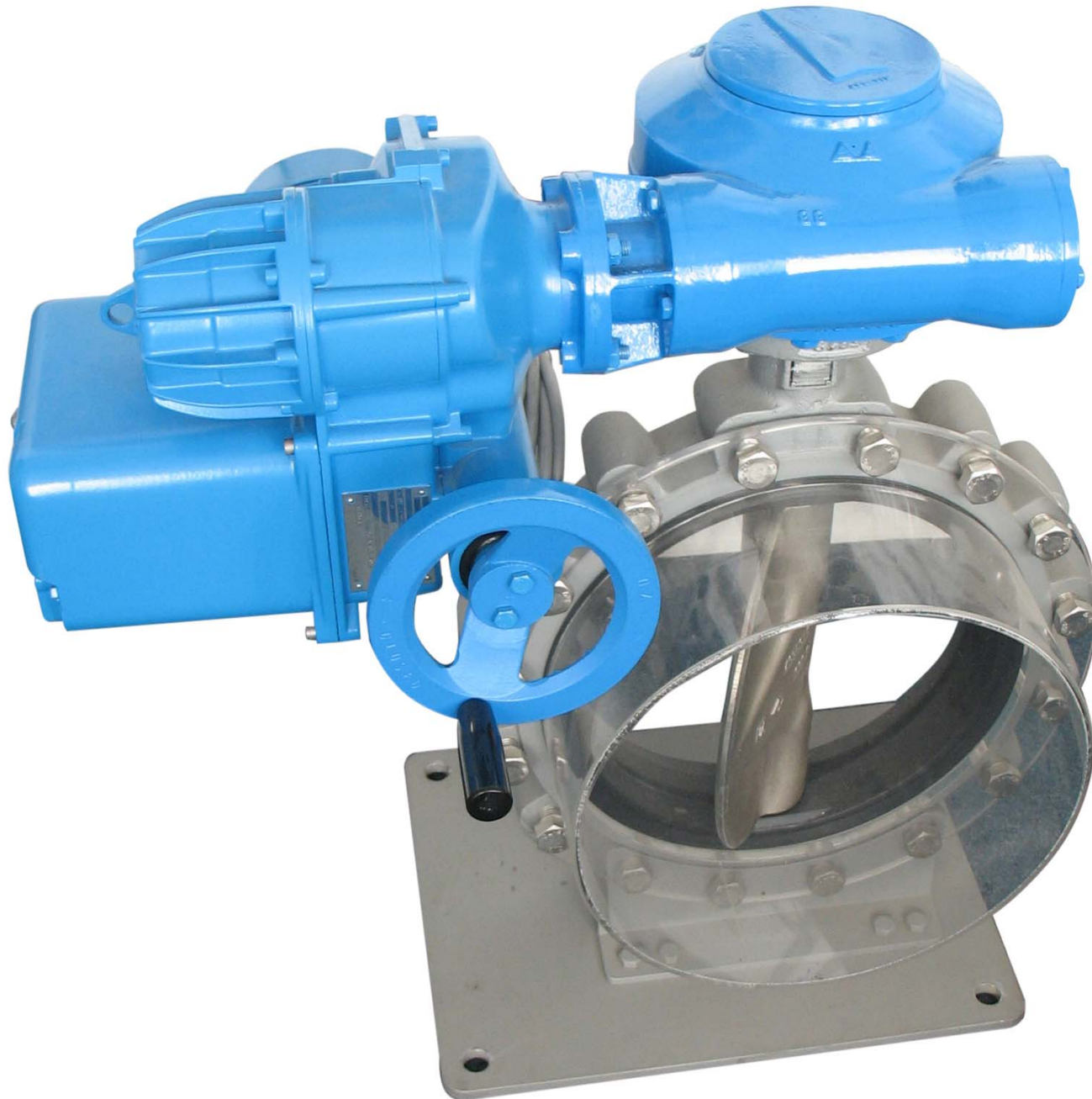
EMG DREHMO® —— 世界水准的智能一体化电动执行机构



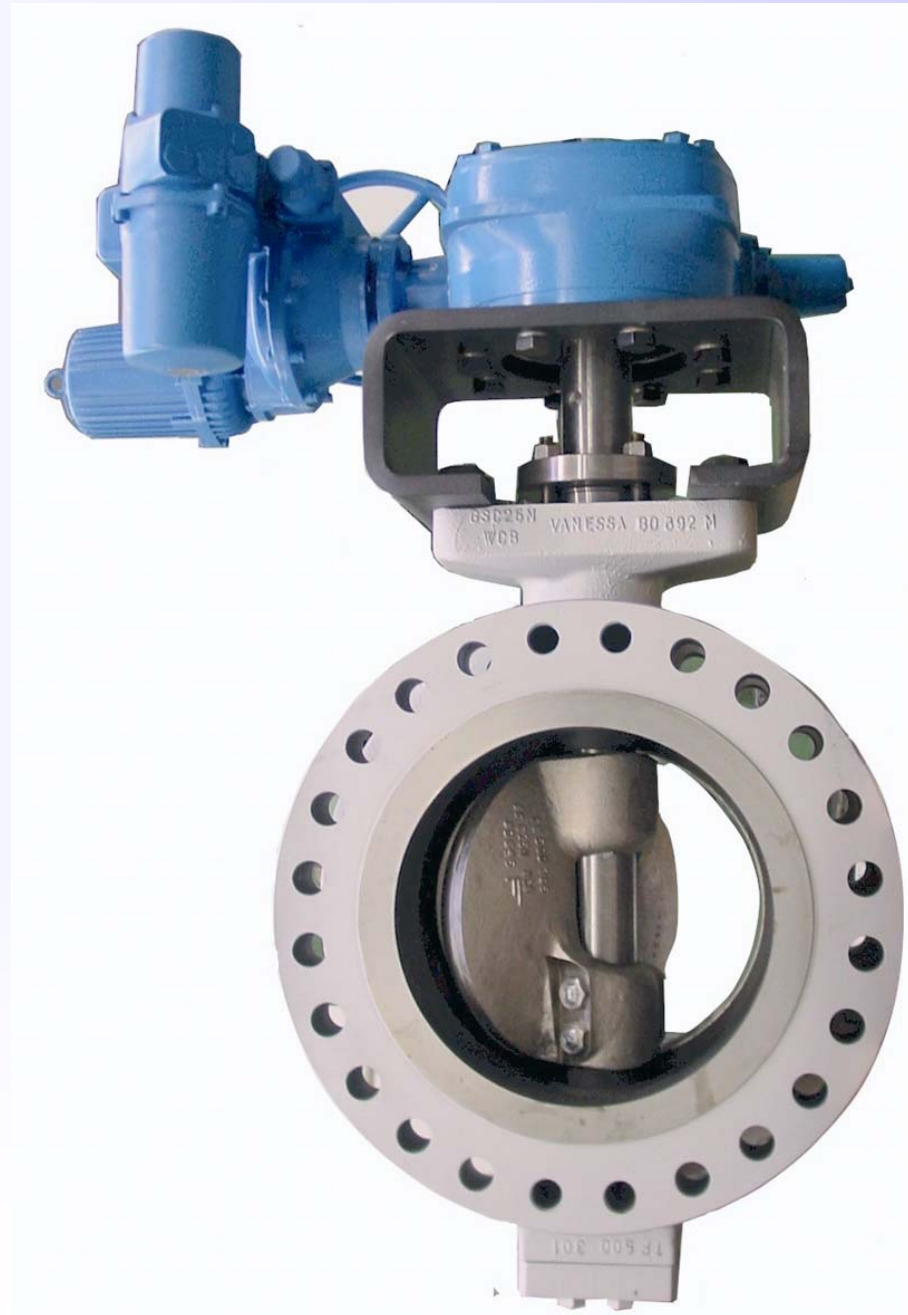
EMG DREHMO® —— 世界水准的智能一体化电动执行机构



EMG DREHMO® —— 世界水准的智能一体化电动执行机构



EMG DREHMO® —— 世界水准的智能一体化电动执行机构



EMG DREHMO® —— 世界水准的智能一体化电动执行机构



EMG DREHMO® —— 世界水准的智能一体化电动执行机构



EMG DREHMO® —— 世界水准的智能一体化电动执行机构



EMG DREHMO® —— 世界水准的智能一体化电动执行机构



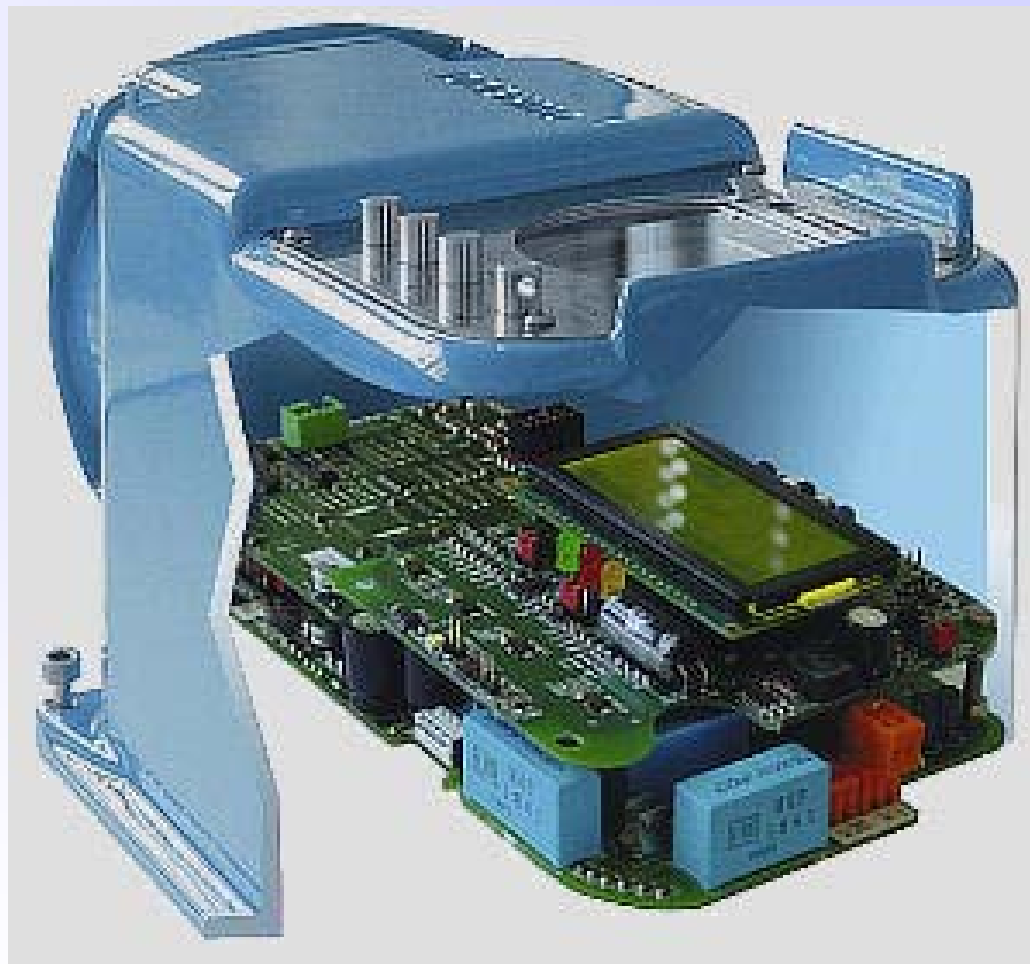
EMG DREHMO® —— 世界水准的智能一体化电动执行机构



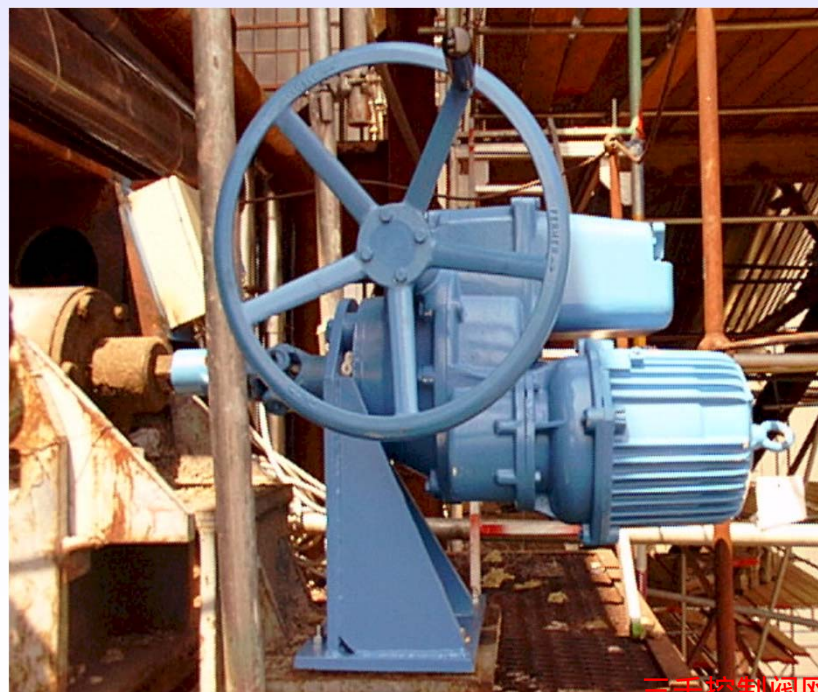
EMG DREHMO® —— 世界水准的智能一体化电动执行机构

 控制单元

精工细琢，卓尔不凡！



EMG DREHMO® —— 世界水准的智能一体化电动执行机构



EMG DREHMO® —— 世界水准的智能一体化电动执行机构



EMG DREHMO® —— 世界水准的智能一体化电动执行机构

