

first in **safety**

safety instrumented system - HIPPS



**mokveld**

三千控制阀网

[www.cv3000.com](http://www.cv3000.com)

## Introduction to HIPPS

HIPPS is an abbreviation of 'High Integrity Pressure Protection System'. HIPPS are applied to prevent over-pressurisation of a plant by shutting-off the source of the high pressure. In traditional systems over-pressure is dealt with through relief or venting systems. These systems have obvious disadvantages such as release of (flammable and toxic) process fluids in the environment and often a large footprint of the installation. With the increasing environmental awareness relief systems are no longer an acceptable solution.

HIPPS provides a technically sound and economically attractive solution to protect equipment in cases where:

- High-pressures and / or flow rates are processed
- The environment is to be protected.
- The economic viability of a development needs improvement
- The risk profile of the plant must be reduced

## What is HIPPS?

HIPPS is an instrumented safety system that is designed and built in accordance with the IEC 61508 and IEC 61511 standards. These international standards refer to safety functions and Safety Instrumented Systems (SIS) when discussing a device to protect equipment, personnel and environment.

Older standards use terms like safety shut-down systems, emergency shut-down systems or last layers of defence. A system that closes the source of over-pressure within 2 seconds with at least the same reliability as a safety relief valve is usually called a HIPPS.

A High Integrity Pressure Protection System is a complete functional loop consisting of:

- The initiators that detect the high pressure. These initiators may be electronic or mechanical
- For electronic HIPPS a logic solver, which processes the input from the initiators to an output to the final element
- The final elements, that actually perform the corrective actions in the field by bringing the process to a safe state. The final element consists of a valve + actuator and possibly solenoids or mechanical initiators.



*Flaring of hydrocarbons causes damage to the environment and the CO<sub>2</sub> production is not in line with the Kyoto Protocol.*

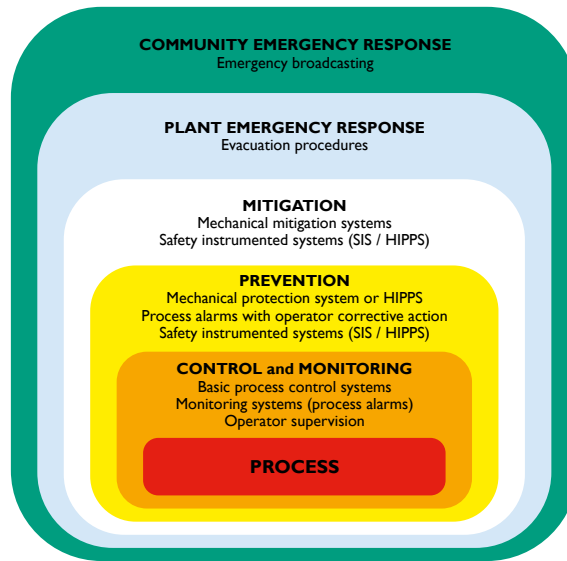


*HIPPS prevent over-pressurization by shutting down the source of the high pressure.*

## Standards & Design Practices

The ever-increasing flow rates in combination with the environmental constraints initiated the widespread and rapid acceptance in the last decades of HIPPS as the ultimate protection system.

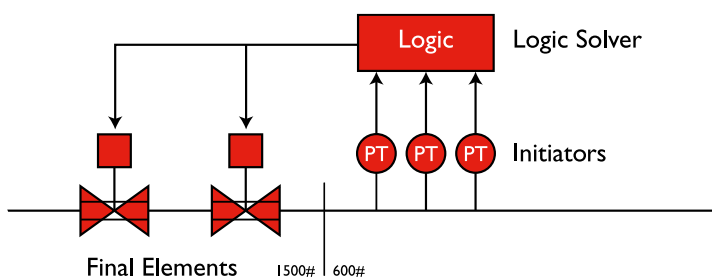
The International Electro technical Commission (IEC) introduced the IEC 61508 standard in 1998 (and revised in 2010) and the IEC 61511 standard in 2003. These are performance based, non-prescriptive, standards which provide a detailed framework and a life-cycle approach for the design, implementation and management of safety systems applicable to a variety of sectors with different levels of risk definition. These standards also apply to HIPPS.



The IEC 61508 mainly focuses on Electrical/Electronic/Programmable Safety-related systems. However it also provides a framework for safety-related systems based on other technologies including mechanical systems. The IEC 61511 was introduced by the IEC specifically for designers, integrators and users of safety instrumented systems and covers the other parts of the safety loop (initiators and final elements) in greater in detail.

The basis for the design of safety instrumented systems is the required Safety Integrity Level (SIL). The SIL is obtained during the risk analysis of the plant or process and represents the required risk reduction. The SIS shall meet the requirements of the applicable SIL level which ranges from 1 to 4. The IEC standards define the requirements for each SIL level for the lifecycle of the equipment, including design and maintenance. The SIL level also defines a required Probability of Failure on Demand (PFD) for the complete loop and architectural constraints for the loop and its different elements.

In practice the required protection level for HIPPS in Oil and Gas applications is often SIL3. But this is not cast in stone and should always be the result of a Hazard and Operability study (HAZOP). The requirements of the HIPPS should not be simplified to a PFD level only, the qualitative requirements and architectural constraints form an integral part of the requirements to an instrumented protection system such as HIPPS.



A typical HIPPS safety loop consisting of 2003 initiators (Pressure Transmitters), a logic solver and 2 final elements being valve and actuator.



The European standard EN 12186 (DIN G491) and more specific the EN 14382 (DIN 3381) have been used for many years in (mechanically) instrumented overpressure protection systems. These standards prescribe the requirements for the over-pressure protection systems, and their components, in gas plants. Not only the response time and accuracy of the loop but also safety factors for over-sizing of the actuator of the final element are dictated by these standards. Independent design verification and testing to prove compliance to the EN 14382 standard is mandatory. Therefore users often refer to this standard for HIPPS design. The German DVGW certified the Mokveld final element including a mechanical initiator in 1974 in accordance with DIN 3381 (now EN 14382). Since that date Mokveld has field experience with safety shut-off loops (valves + actuator + initiator) closing within 2 seconds.

## Reliability

Mokveld's vast experience in fast stroking final elements totals over of 35.000 operational years (with more than 2500 valves). The Mokveld final elements (a functional unit consisting of valve + actuator and possibly solenoids or mechanical initiators) are therefore proven-in-use for high reliability safety applications in both clean and unclean hydrocarbon applications. Third parties, like the German TÜV and Atomic Energy Agency, have validated the Mokveld database and the derived reliability data.

The certified Mokveld failure rate for the final element (being the valve including actuator) for a failure to deliver a full stroke in 2 seconds for applications in untreated hydrocarbons is:  $\lambda_d = 1,0 \times 10^{-4}$  / year. The failure rate for a single Mokveld hydraulic mechanical initiator is:  $\lambda_d = 9,7 \times 10^{-4}$  / year. This enables Mokveld to supply a HIPPS to suit SIL 3 or even SIL 4 with a proof test interval of 1 year. This can be achieved without additional electronics, like partial stroke testing. A separate technical datasheet on this subject is available.

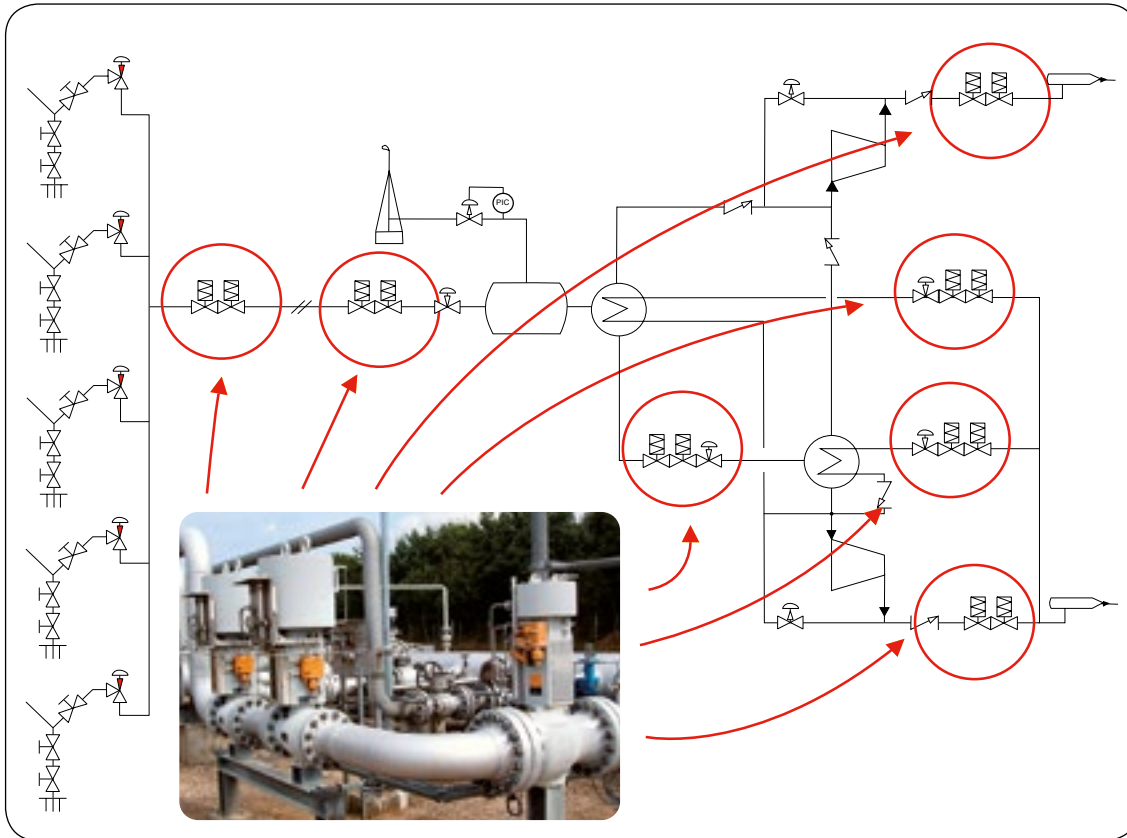
Safety Integrity Level	Probability of Failure on Demand	Architecture acc. IEC 61508 Route 2 <sub>H</sub> 'proven in use'		Notes
		HWTF	Redundancy	
1	$\geq 10^{-2}$ to $< 10^{-1}$	0	1001	All cases
2	$\geq 10^{-3}$ to $< 10^{-2}$	1	1002	High or Continuous mode
2	$\geq 10^{-4}$ to $< 10^{-3}$	0	1001	Low demand mode <1 per year
3	$\geq 10^{-5}$ to $< 10^{-4}$	1	1002	All cases
4	$\geq 10^{-5}$ to $< 10^{-4}$	2	1003 but should be avoided	

Required redundancy acc. IEC 61508 route 2<sub>H</sub>

## Two types of HIPPS

Based on our vast experience and expertise Mokveld offers two types of HIPPS

1. Integral mechanical HIPPS, since 1974
2. Full electronic HIPPS, since 2000



An example of how and where HIPPS can be implemented in, typical production facility.

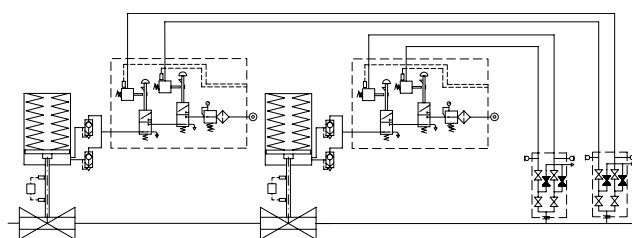
## Initiators

The initiators detect the high pressure (or high level, or temperature). For the mechanical HIPPS this will be Mokveld's mechanical initiators. For the electronic HIPPS this will be safety related pressure transmitters. The safety loop may consist of one or more sensors to achieve the required safety level.

The Mokveld mechanical initiators are certified to EN 14382 (DIN 3381) and have a setpoint accuracy better than 1% of the setpoint. For both the pneumatic and the hydraulic version third party validated reliability data are available. The safety systems based on these initiators are easily identifiable in the plant, easy to operate and relatively simple. This makes it inherently safe systems. As an option a full stand-alone system requiring no external energy is available for applications in remote areas.



HIPPS with two Mokveld mechanical initiators protecting Shell Tutong metering station in Brunei.



Example of a HIPPS consisting of 2 final elements each having two mechanical initiators, SIL 4 is obtained. Testing can be done via the high integrity manifold block with key interlock system.



## Logic Solver

The Logic Solver processes the signals from the initiators (pressure transmitters) and closes the final element de-energising the solenoids. A system based on mechanical initiators does not require a separate logic solver. A SIS or HIPPS utilising pressure transmitters and a Logic Solver are typically used when remote sensing is required. Usually 3 pressure transmitters are used and the Logic Solver de-energises the solenoids when 2 give a high signal (2 out of 3 voting). The logic solver is probably the most complex device in the loop, especially the programmable ones. At present many are available with certificates showing suitability in SIL 3 safety loops. In general Mokveld uses hard-wired solid-state Logic Solvers. These systems are inherently fail-safe and are therefore certified for applications in SIL 4 loops. These Logic Solvers are insensitive to security breaches while they do not use software.

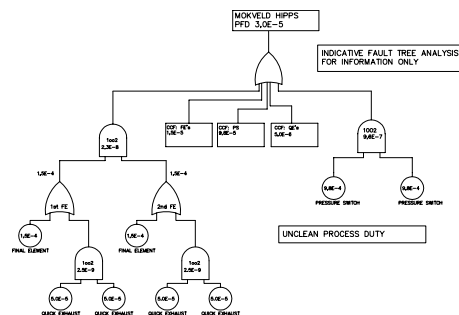
## Final Element

The IEC 61508 does not give the final elements the attention they deserve, the IEC 61511 already has more focus on this part of the loop. Whereas special attention is specifically required for fast acting safety loops (closure below 0,7 seconds per inch, or even 2 seconds) in a low demand mode. The only international standard recognizing this is the EN 14382 which refers to the design of the final element.

Slam-shut valves in HIPPS applications usually have long periods of inactivity (valve remains fully open for a long period). The design shall be such that this does not influence the response time of the valve, nor the stroking speed once a demand occurs. The IEC61508 : 2010 clearly confirms a partial stroke test may not be considered diagnostics and therefore DC = 0 for final elements (see separate publication).



Typical logic solver panel.



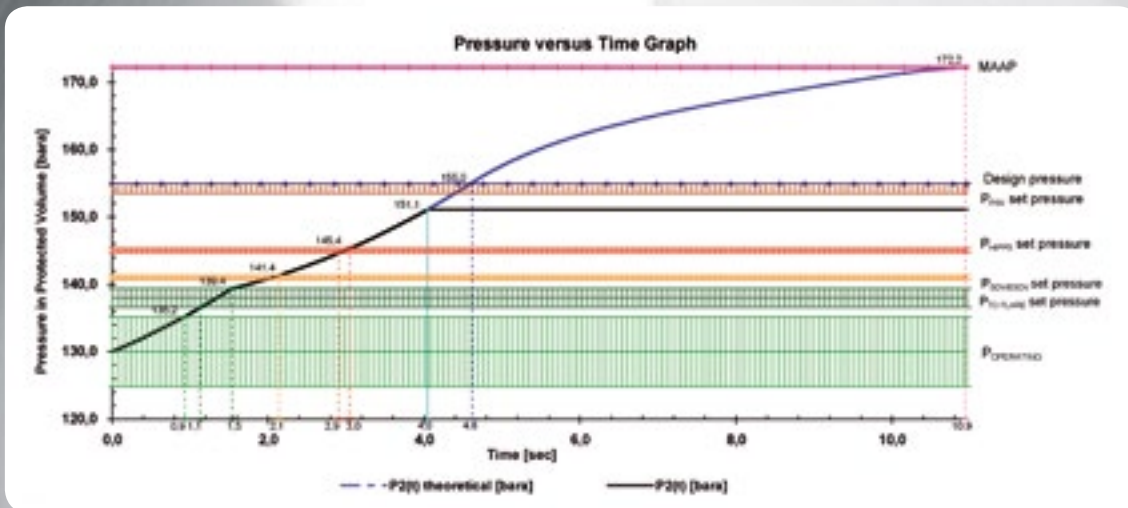
Mokveld engineering assistance will provide a fault tree analysis of your system during proposal stage.



The following features make the Mokveld axial on-off valve inherently safe and suitable for HIPPS applications:

- a) The break-away thrust is minimal, even after long periods of inactivity.
- b) Erosion and subsequent degradation into leak tightness is avoided.
- c) The required actuator thrust is low and independent of the pressure differential across the valve.
- d) Very short stroking times (e.g. 2 seconds for 24 inch valves) are possible due to the low mass of the moving parts.
- e) The piston does not slam onto the seat but slides into the seat.
- f) The integrated design of valve and actuator assures that the thrust safety margin is sufficient at all times.

Please refer to the Mokveld axial on-off valve brochure for more detailed explanation of the specific benefits.



Mokveld can assist in defining the response time of your system in the proposal stage.

### Mokveld Engineering Assistance

Mokveld engineers can provide support in an early phase of the project. We can assist in defining suitable HIPPS architecture, fault tree analysis, determining the pressure rise in the protected volume and the required stroking times and set points of the entire system.

For further  
information  
contact:

**Mokveld Valves BV**  
[www.mokveld.com](http://www.mokveld.com)

Copyright  
© Mokveld Valves,  
The Netherlands.  
May 2015



# global network - supported locally



## Mokveld Offices

- 1 **Mokveld Valves BV**
- 2 Mokveld USA Inc
- 3 Mokveld UK Ltd
- 4 Mokveld Norge AS
- 5 Mokveld Central Europe GmbH
- 6 Mokveld Marketing JV
- 7 Mokveld Valves BV, Middle East
- 8 Mokveld Valves BV, Saudi Arabia
- 9 Mokveld Valves BV, Asia Pacific
- 10 Mokveld Valves BV, China
- 11 Mokveld Valves BV, Algeria
- 12 Mokveld Do Brasil Ltda, Brazil

## Adresses

- Gouda, The Netherlands**  
Houston (Tx), United States of America  
Cirencester, United Kingdom  
Stavanger, Norway  
Neustadt an der Weinstraße, Germany  
Sumy, Ukraine  
Dubai, United Arab Emirates  
Al Khobar, Saudi Arabia  
Kuala Lumpur, Malaysia  
Beijing, the People's Republic of China  
Alger, Algeria  
Rio de Janeiro, Brazil

## E-mail

- info@mokveld.com**  
usa@mokveld.com  
uk@mokveld.com  
norge@mokveld.com  
central.europe@mokveld.com  
mokveld.marketing@mokveld.com  
mideast@mokveld.com  
saudi.arabia@mokveld.com  
asiapacific@mokveld.com  
china@mokveld.com  
algeria@mokveld.com  
brazil@mokveld.com

